

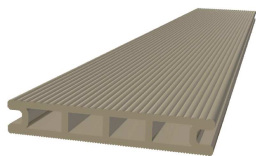


TECHNICAL DATASHEET





DESIGNTION	REF.	UND/PALLET	COLOUR
------------	------	------------	--------



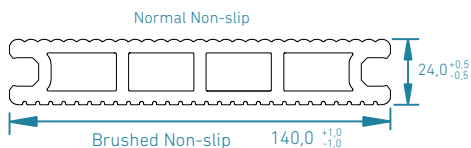
Weight mL - 2,36 ± 0,2kg

Hollow Board 4200x140x24
Hollow Board 2300x140x24

DEC01420
DEU01230

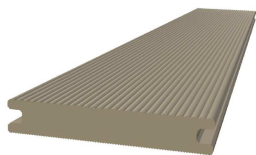
100
175

CI-Grey
BR-Rose Beige
BF-Beech Beige
RW-Red Wood
CH-Chocolate
NE-Dark Black



Length
tolerance +15,0
-0,0

Reference item example - Hollow Board 4200x140x24 in
Beech Beige: DEC01420BF



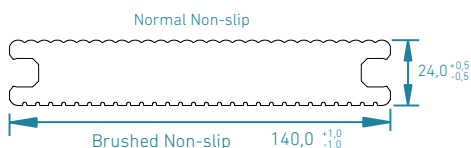
Weight mL - 4,17 ± 0,2kg

Solid Board 4200x140x24
Solid Board 2300x140x24

DEC03420
DEU03230

50
100

CI-Grey
BR-Rose Beige
BF-Beech Beige
RW-Red Wood
CH-Chocolate
NE-Dark Black



Length
tolerance +15,0
-0,0

Reference item example - Hollow Board 4200x140x24 in
Beech Beige: DEC03420BF



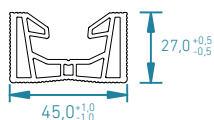
Weight mL - 0,69 ± 0,1kg

Quick-fix Joist 2300x45x27

DEU11230

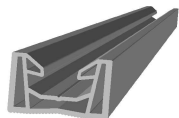
360

PR- Black



Length
tolerance +15,0
-0,0

Reference item example - Quick-fix Joist 2300x45x27 in
Black: DEU11230PR



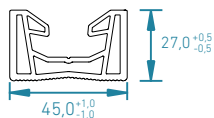
Weight mL - 1,22 ± 0,2kg

Quick-fix Joist Alu 2300x45x27

DEU13230

360

AL-Aluminium




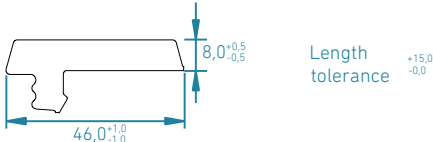
Length
tolerance +15,0
-0,0

Reference item example - Quick-fix Joist Alu 2300x45x27
in Aluminium: DEU13230AL

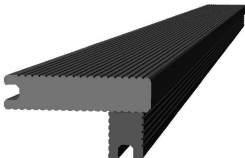
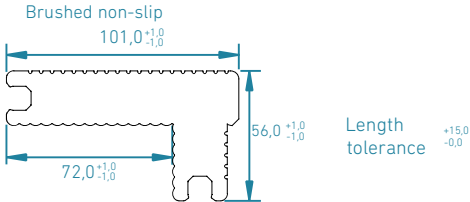




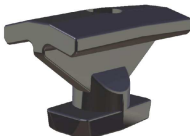
DESIGNTION	REF.	UND/PALLET	COLOUR
------------	------	------------	--------

 <p>Weight mL - 0,62 ± 0,1kg</p>	Fastener 2300x46x8	DEU21230	52	CI-Grey BR-Rose Beige BF-Beech Beige RW-Red Wood CH-Chocolate NE-Dark Black
				
Reference item example - Fastener 2300x46x8 in Dark Black: DEU21230NE				




 <p>Weight mL - 4,23 ± 0,2kg</p>	Step 2300x101x56	DEU22230	1	CI-Grey BR-Rose Beige BF-Beech Beige RW-Red Wood CH-Chocolate NE-Dark Black
				
Reference item example - Step 2300x101x56 in Dark Black: DEU22230NE				



	Quick-fix Intermediate Clip	DEC70001	100	PR-Black CZ-Grey CA-Brown
Reference item example - Quick-fix Intermediate Clip in Black: DEC70001PR				



	Quick-fix Pro Intermediate Clip	DEC70004	25	PR-Black CZ-Grey CA-Brown
Reference item example - Quick-fix Pro Intermediate Clip in Black: DEC70004PR				



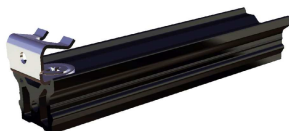
DESIGNTION	REF.	UND/PALLET	COLOUR
------------	------	------------	--------

Quick-fix Terminal Clip

DEC70002

25

PR-Black



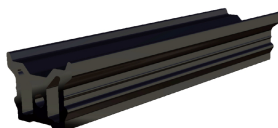
Reference item exemple - Quick-fix Terminal Clip in
Black: DEC70002PR

Fastener Holder

DEC70003

25

PR-Black



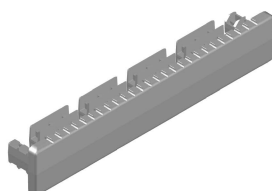
Reference item exemple - Fastener Holder in Black:
DEC70003PR

Board End Cap 140x24

DEC70005

25

CI-Grey
BF-Beech Beige
RW-Red Wood
CH-Chocolate
NE- Dark Black



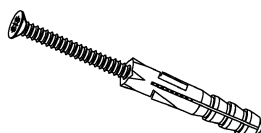
Reference item exemple - Board End Cap 140x24
in Grey: DEC70005CI

Inox Screw 6x60
Whith Plug Ø8

DEC80001

50

IX-Inox

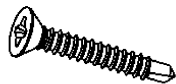


Reference item exemple - Inox Screw 6x60
Whith Plug Ø8: DEC80001IX

Note: Screw PZ3 with Stainless Steel A2



	DESIGNTION	REF.	UND/PALLET	COLOUR
--	------------	------	------------	--------



Self Drilling Screw
3,5x25 Inox

DEC80002

100

IX-Inox

Reference item exemple - Self Drilling Screw 3,5x25
in Inox: DEC80002IX

Note: Screw PH2 with Stainless Steel A2



Self Drilling Screw
4,2x60 Inox

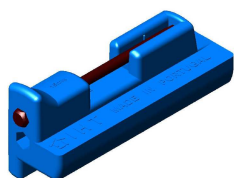
DEC80003

50

IX-Inox

Reference item exemple - Self Drilling Screw 4,2x60
in Inox: DEC80003IX

Note: Screw PH2 with Stainless Steel A2



CTOOL Tool to Install
CDECK/CWALL

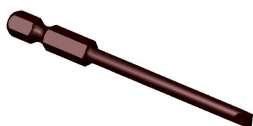
DEC90001

1

AZ-Blue

Reference item exemple - CTOOL Tool to Install
CDECK/CWALL in Blue: DEC90001AZ

Note: Includes 1/4 Bit with 4mm Slit



1/4 Bit with 4mm Slit
for CTOOL

DEC90002

5

AC-Steel

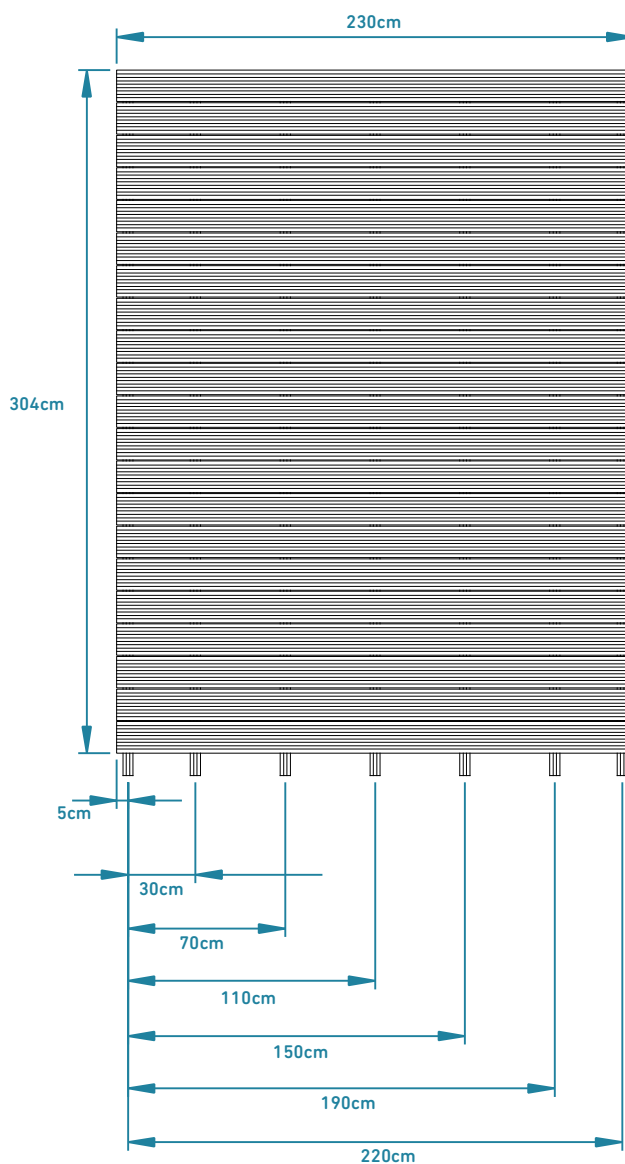
Reference item exemple - 1/4 Bit with 4mm for CTOOL
in Steel: DEC90002AC



ESTIMATED AMOUNT BY SQ.M FOR RESIDENTIAL USE

CODE	PRODUCT	QUANTITY (2,3m x 3,04m)	QUANTITY/SQ.M
DEU0X230XX	BOARD 2300x140x24	21x2,3=48,3m	≈ 3 Und/sq.m
DEU1X230XX	QUICK-FIX JOIST 2300x45x27	7x3=21m	≈ 1,31 Und/sq.m
DEC70001XX	QUICK-FIX INTERMEDIATE CLIP	140 Und	≈ 20 Und/sq.m
DEC70002PR	QUICK-FIX TERMINAL CLIP	14 Und	≈ 2 Und/sq.m

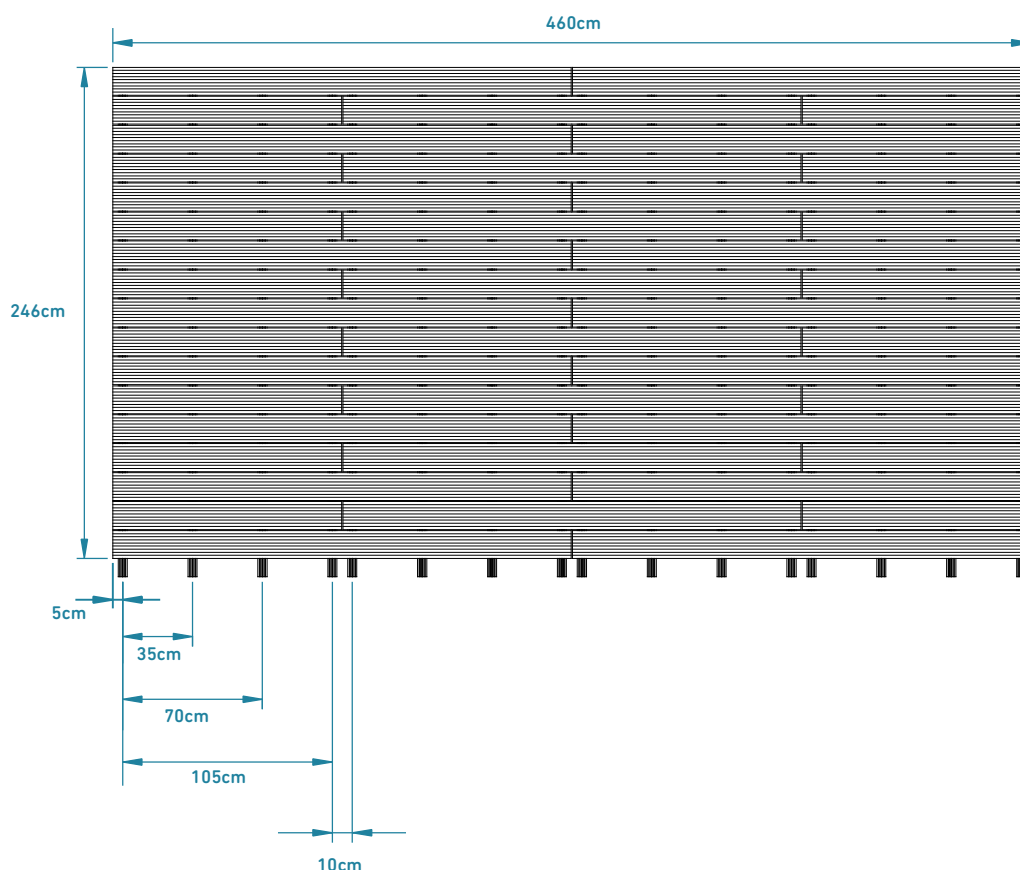
(The amounts given are merely examples, given that actual need will depend on the typology of the area and the way the decking is applied.)



ESTIMATED AMOUNT BY SQ.M FOR COMMERCIAL USE

CODE	PRODUCT	QUANTITY (2,3m x 2,46m)	QUANTITY/SQ.M
DEU0X230XX	BOARD 2300x140x24	34x2,3=78,2m	≈ 3 Und/sq.m
DEU1X230XX	QUICK-FIX JOIST 2300x45x27	16x2,46=39,36m	≈ 1,52 Und/sq.m
DEC70001XX	QUICK-FIX INTERMEDIATE CLIP	256 Und	≈ 23 Und/sq.m
DEC70002PR	QUICK-FIX TERMINAL CLIP	32 Und	≈ 3 Und/sq.m

(The amounts given are merely examples, given that actual need will depend on the typology of the area and the way the decking is applied.)





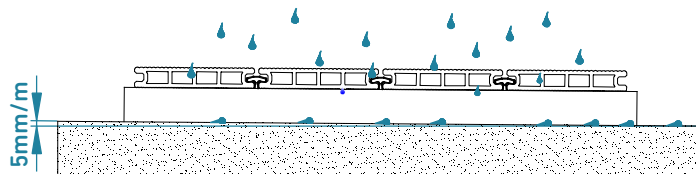
GENERAL RULES

- Items from the CDECK range should be stored on a flat surface, and the items should be protected from direct exposure to sunlight, rain, snow, and other adverse climatic conditions.
- The WPC profiles (e.g.: Boards) should remain on site for at least 48 hours before being fitted, so that the material can adapt to the climatic conditions.
- Due to the fact that the base material (WPC) includes wood, there may be small differences of colour between profiles. It is therefore advisable to have a varied distribution of profiles, to cater for these natural discrepancies.
- Before starting the installation you should always check that you have the latest version of the installation manual.
- In large areas, the installation of the CDECK should be carried out in different phases, consisting of no more than 100 sq.m per phase.
- CDECK flooring should not be installed in extreme weather conditions, such as temperature below 5 °C, relative humidity above 90%, snow, etc.
- The CDECK profiles are not structural profiles, and should not be installed as suspended constructions.
- The CDECK range is a floating deck range, so its boards should never be screwed to the base or fastened to any items other than those listed in this manual.
- The installation of CDECK profiles should be carried out in such a way as to ensure no water is accumulated in any parts, particularly inside the boards.
- It is essential to ensure the aeration of the Decking and so the space between the boards and the space between the boards and the ground should never be obstructed.
- The CDECK range is intended for use in areas of movement involving pedestrian use only.
- If you have any different needs that are not covered by this manual, you should contact IHT to obtain additional instructions.



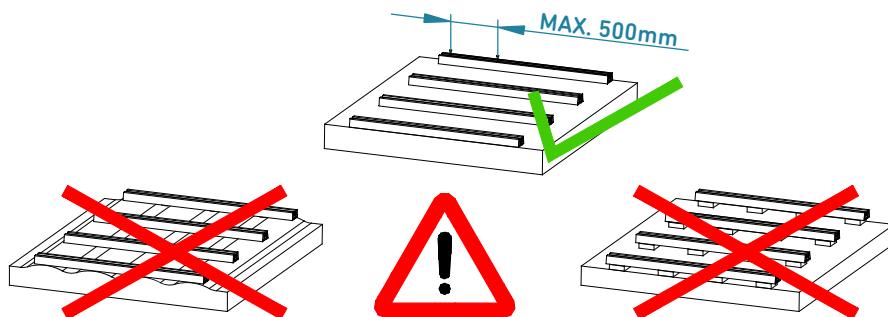
1.1

The installation surface should be completely flat and stable (e.g. 10 - 15 cm of solid concrete), and should slope for water drainage by at least 5 mm per metre in the direction of the Joists and in the direction of the Boards.



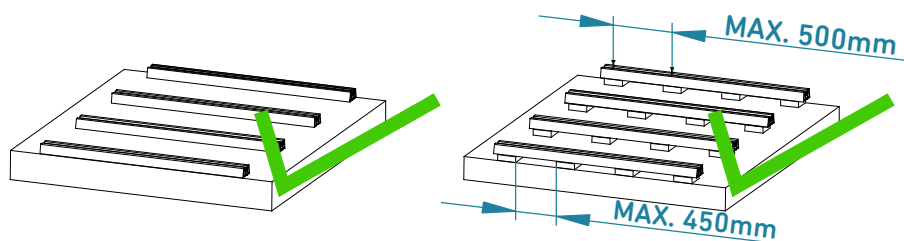
1.2.1

DEU11230PR



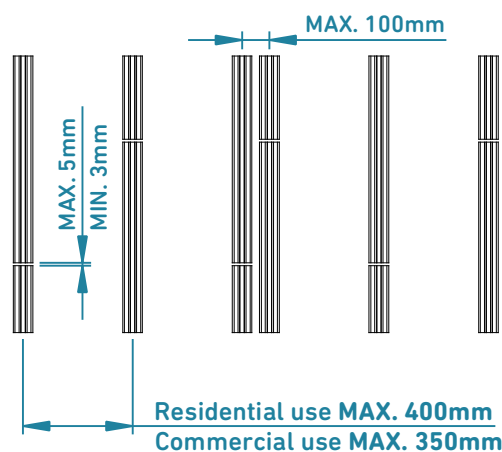
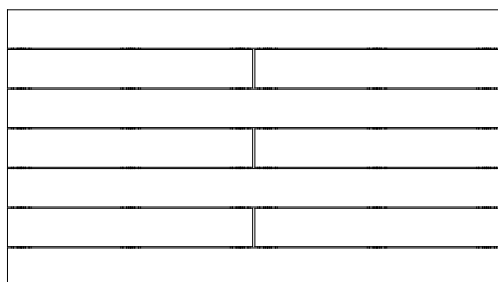
1.2.2

DEU13230AL

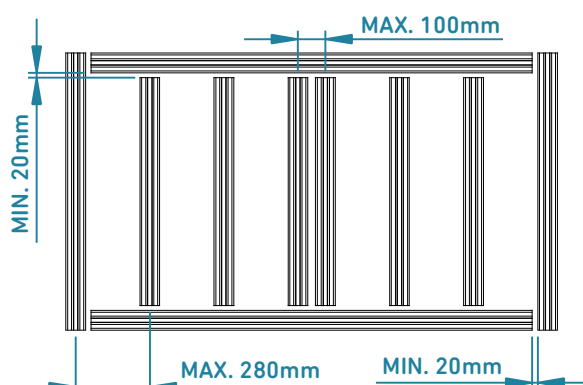
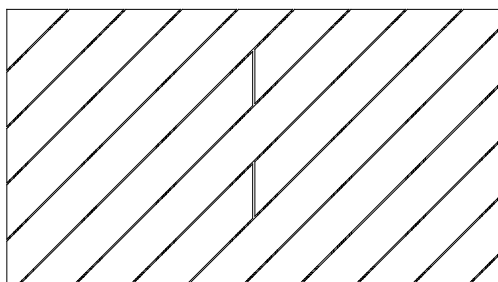


FASTENING THE QUICK-FIX JOISTS

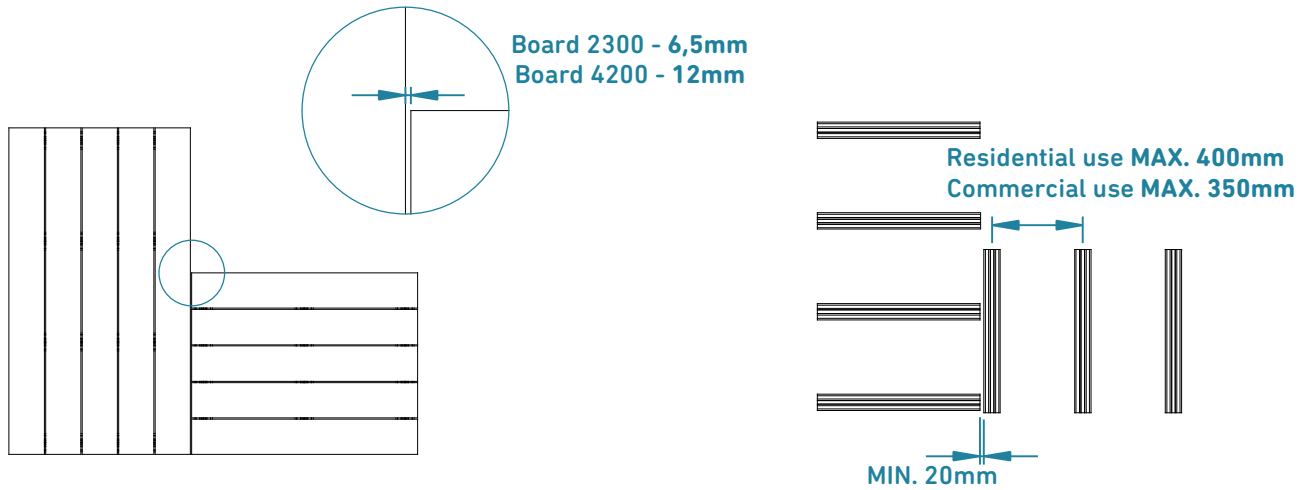
2.1 LAGGED ASSEMBLY (ENGLISH ASSEMBLY)



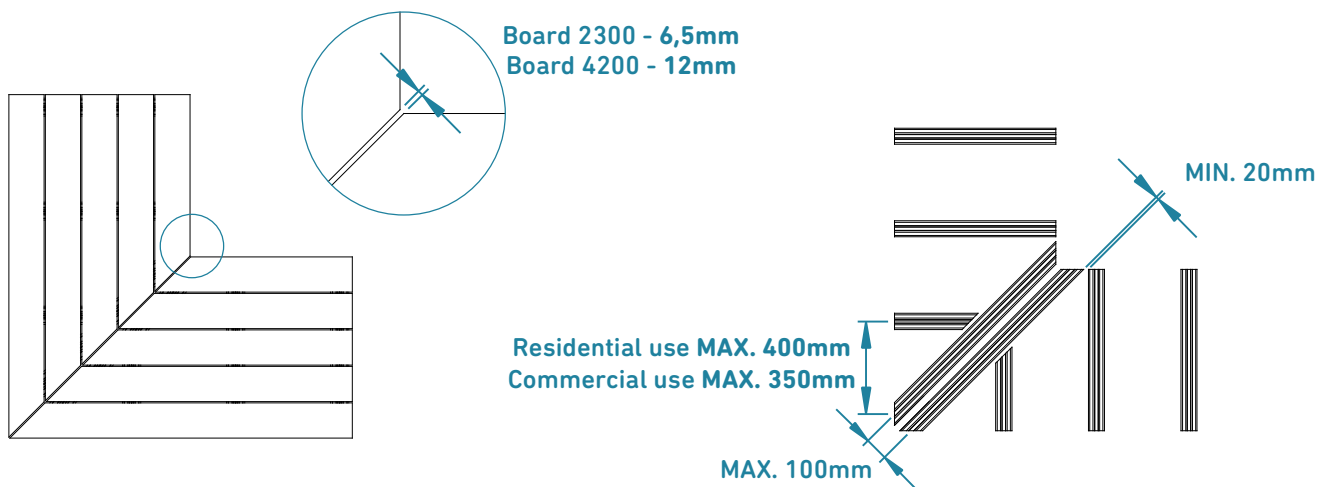
2.2 LAGGED ASSEMBLY (ENGLISH ASSEMBLY) AT 45°



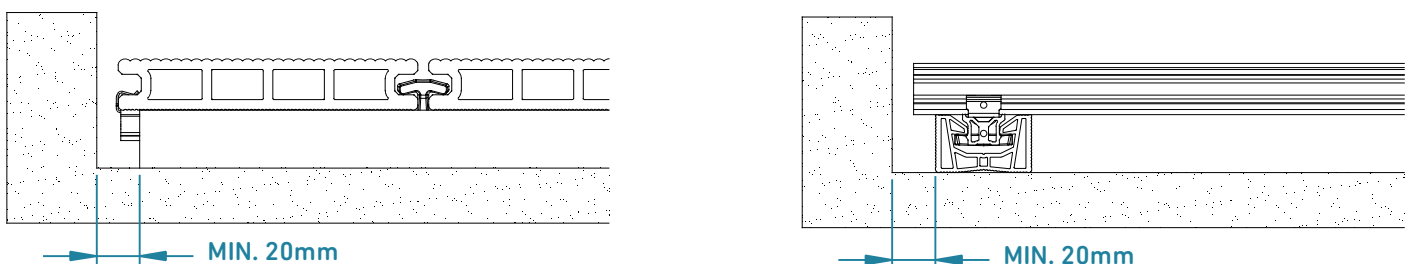
2.3 PERPENDICULAR FINISHING



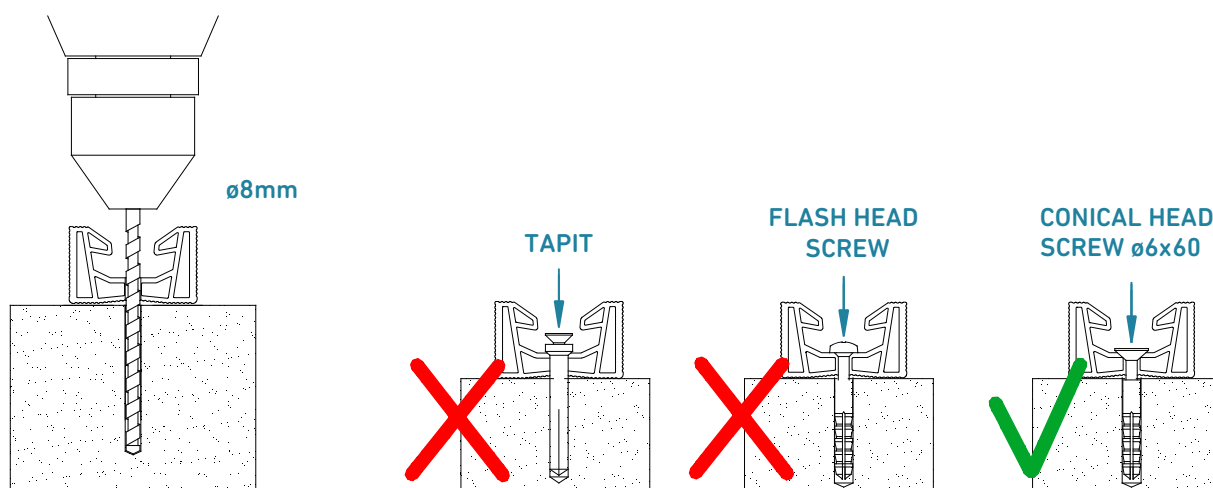
2.4 SQUARE FINISHING



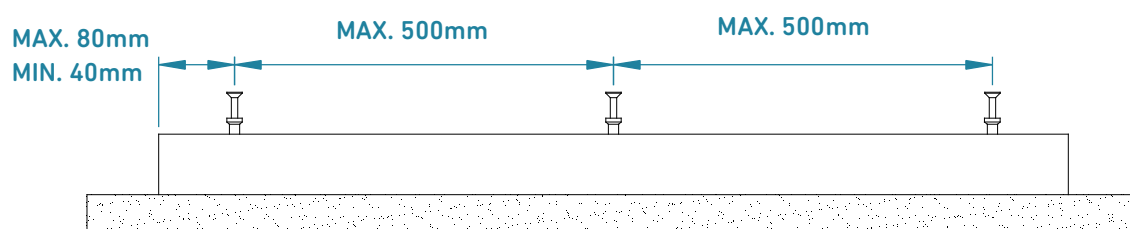
2.5



2.6

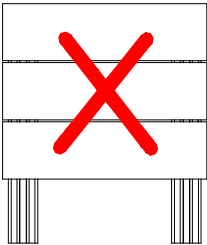


2.7

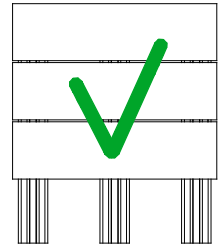




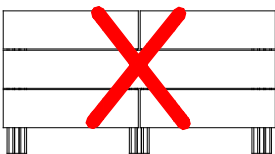
3.1



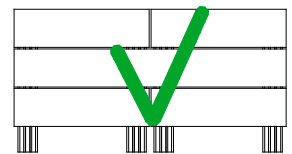
Irrespective of the distance between the Joists, under no circumstances can the Boards be supported by less than 3 Joists.



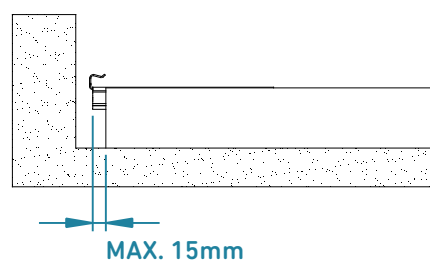
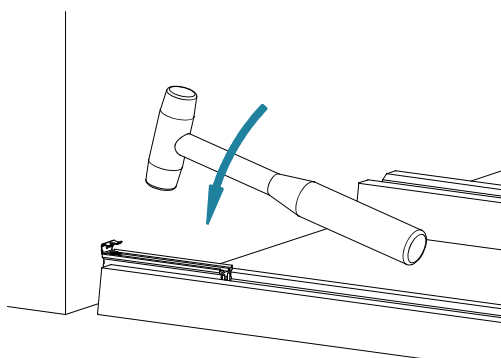
3.2



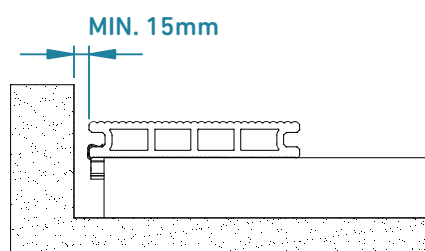
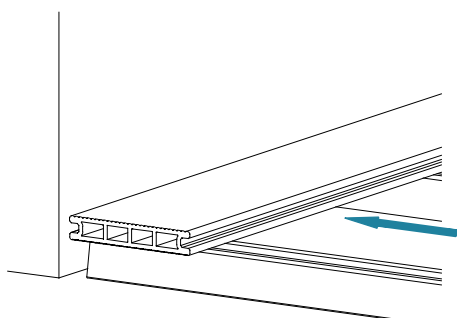
For assembly involving boards arranged top to top, 2 Joists should always be used (1 for each board) with the respective Clips.



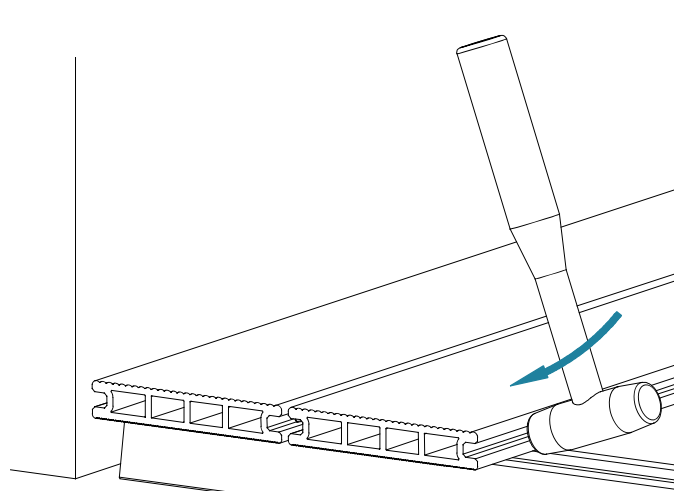
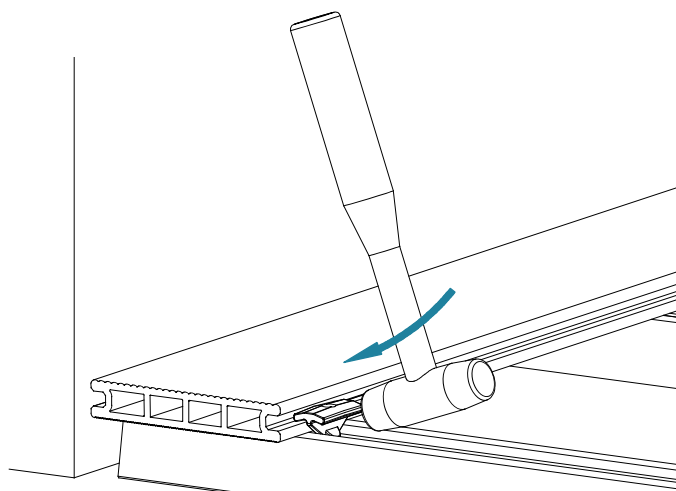
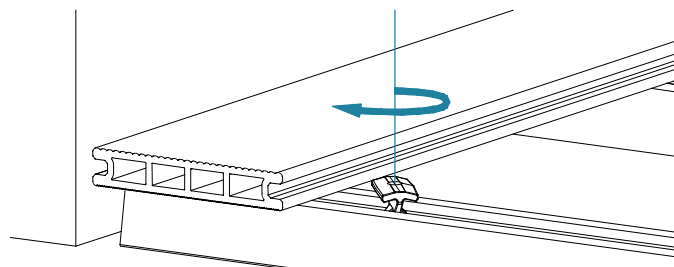
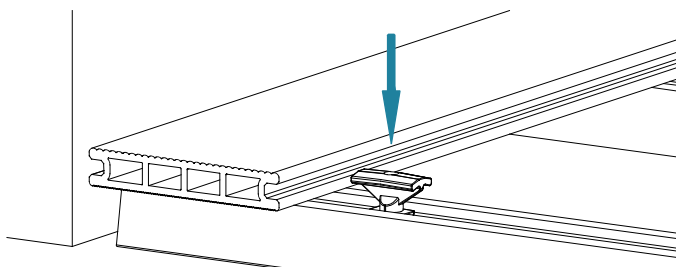
3.3



3.4

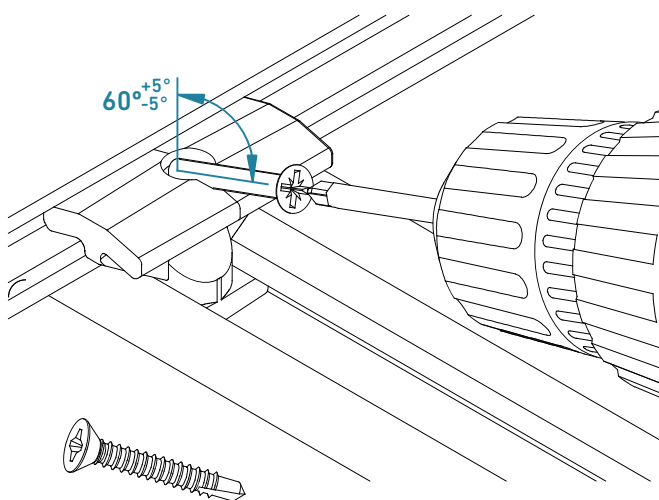
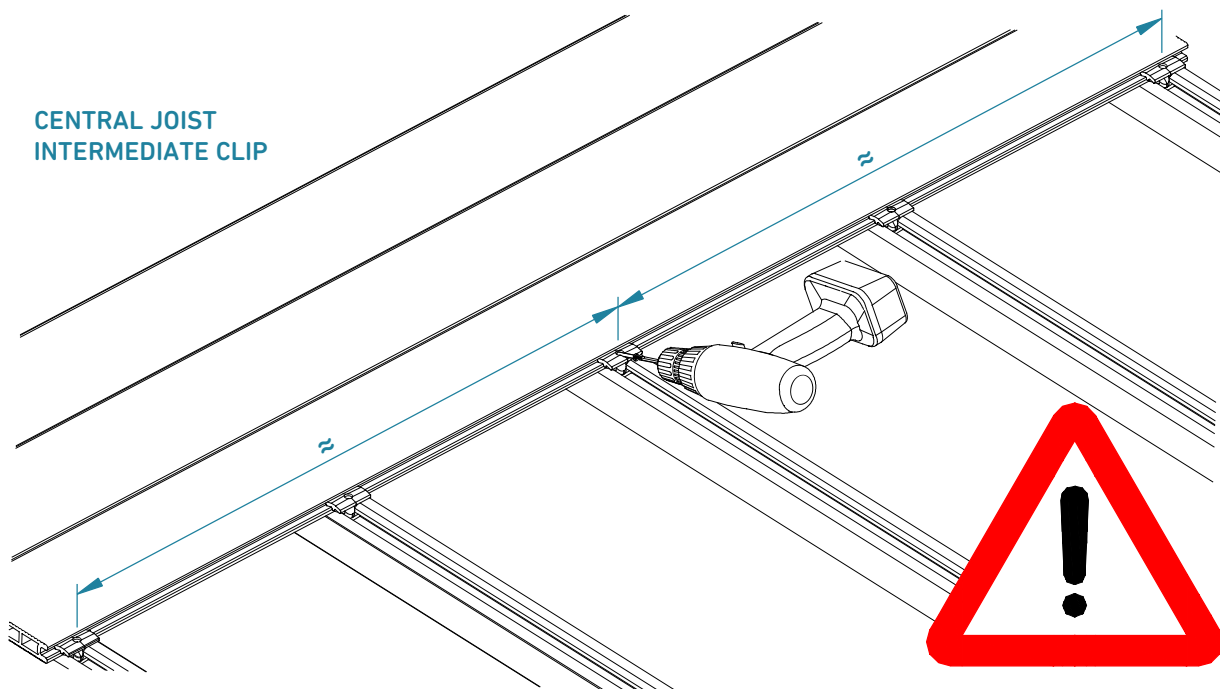


3.5

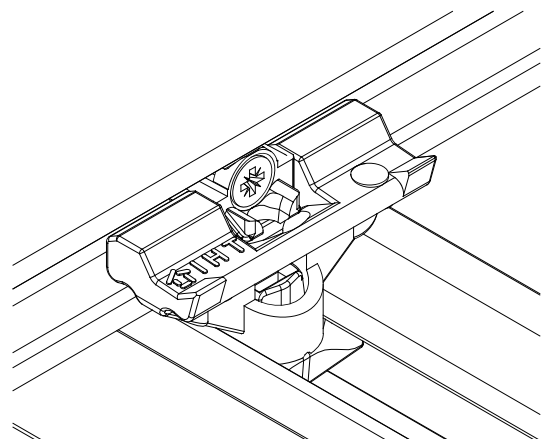
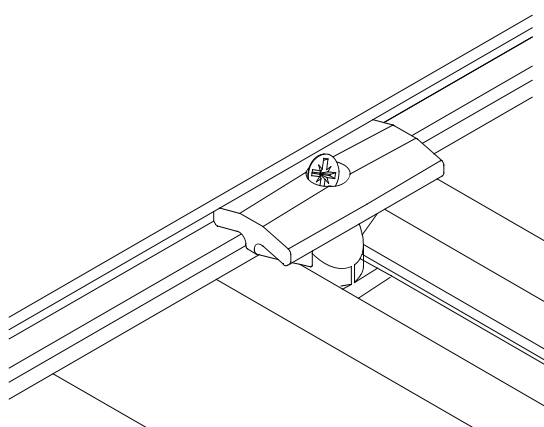
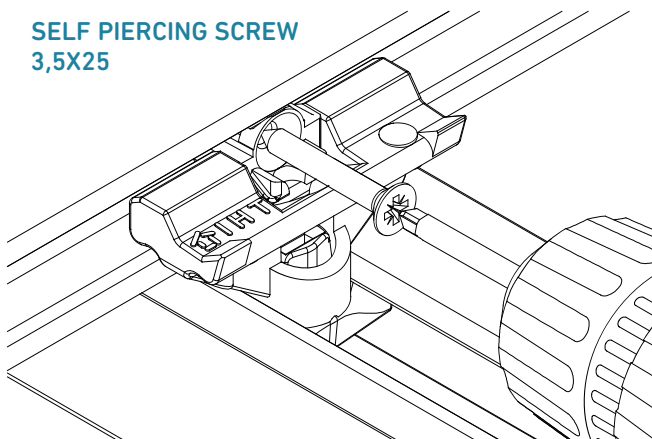


3.6 FASTENING THE BOARD IN THE CENTRAL JOIST (TO AVOID SLIPPAGE)

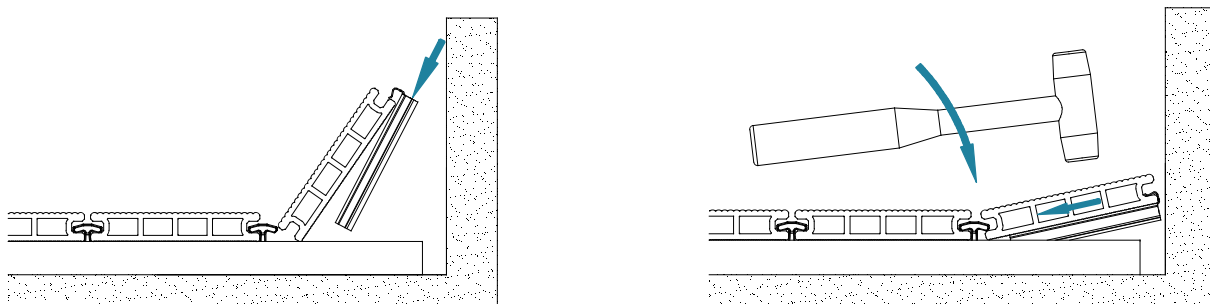
CENTRAL JOIST
INTERMEDIATE CLIP



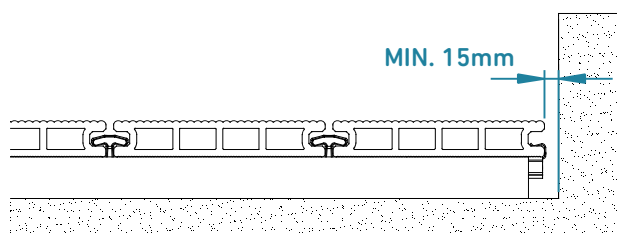
SELF PIERCING SCREW
3,5X25



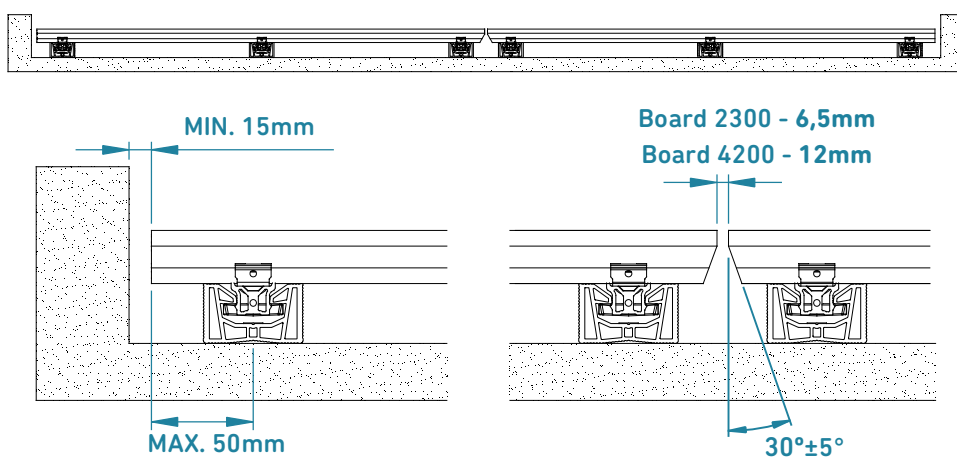
3.7



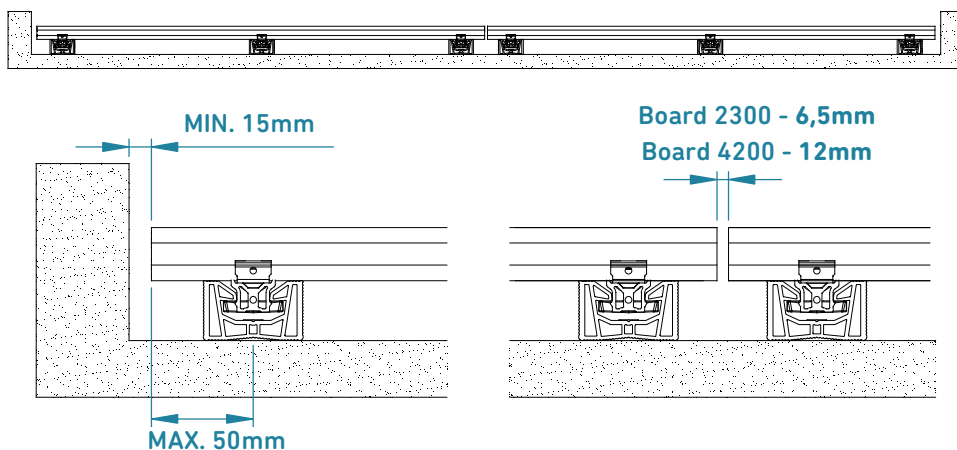
3.8



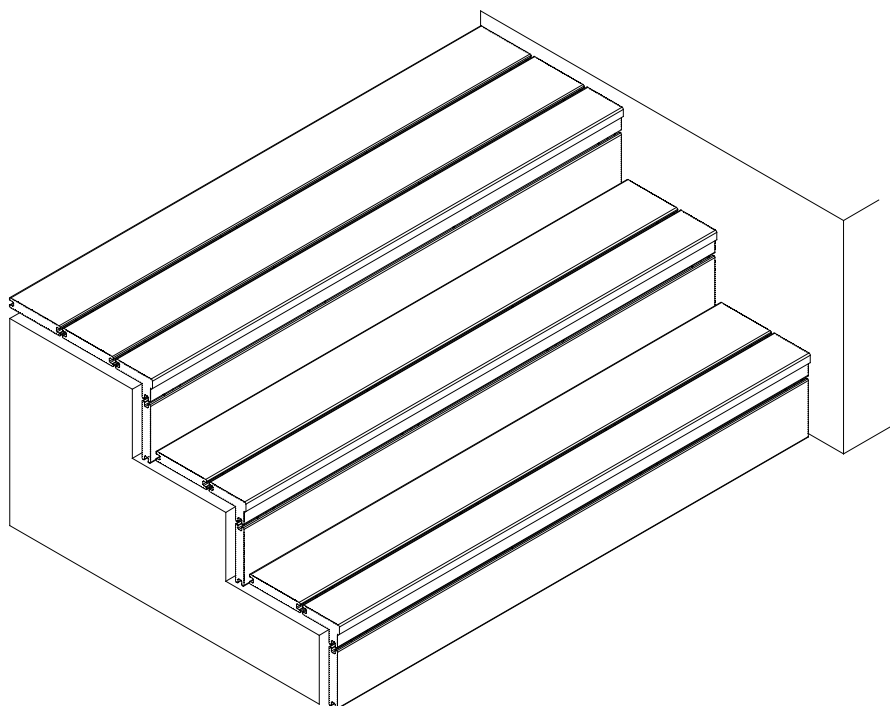
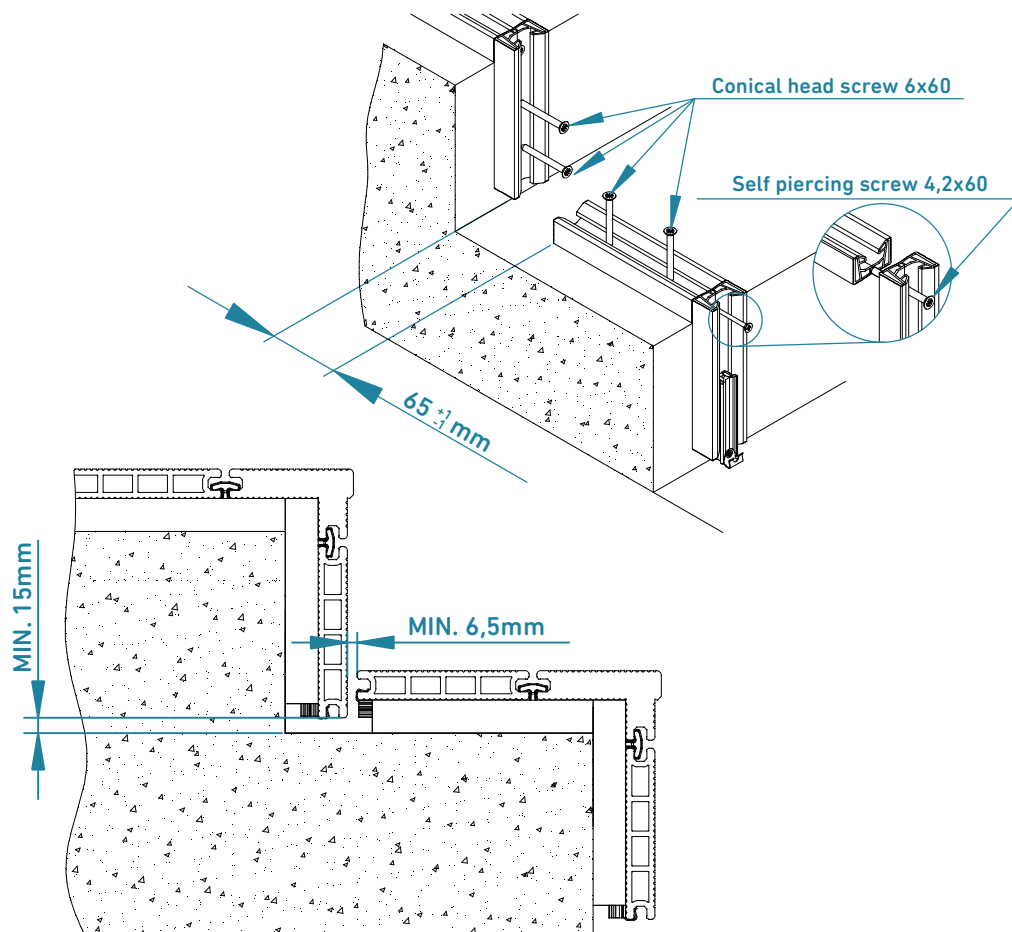
3.9.1 HOLLOW BOARD



3.9.2 SOLID BOARD

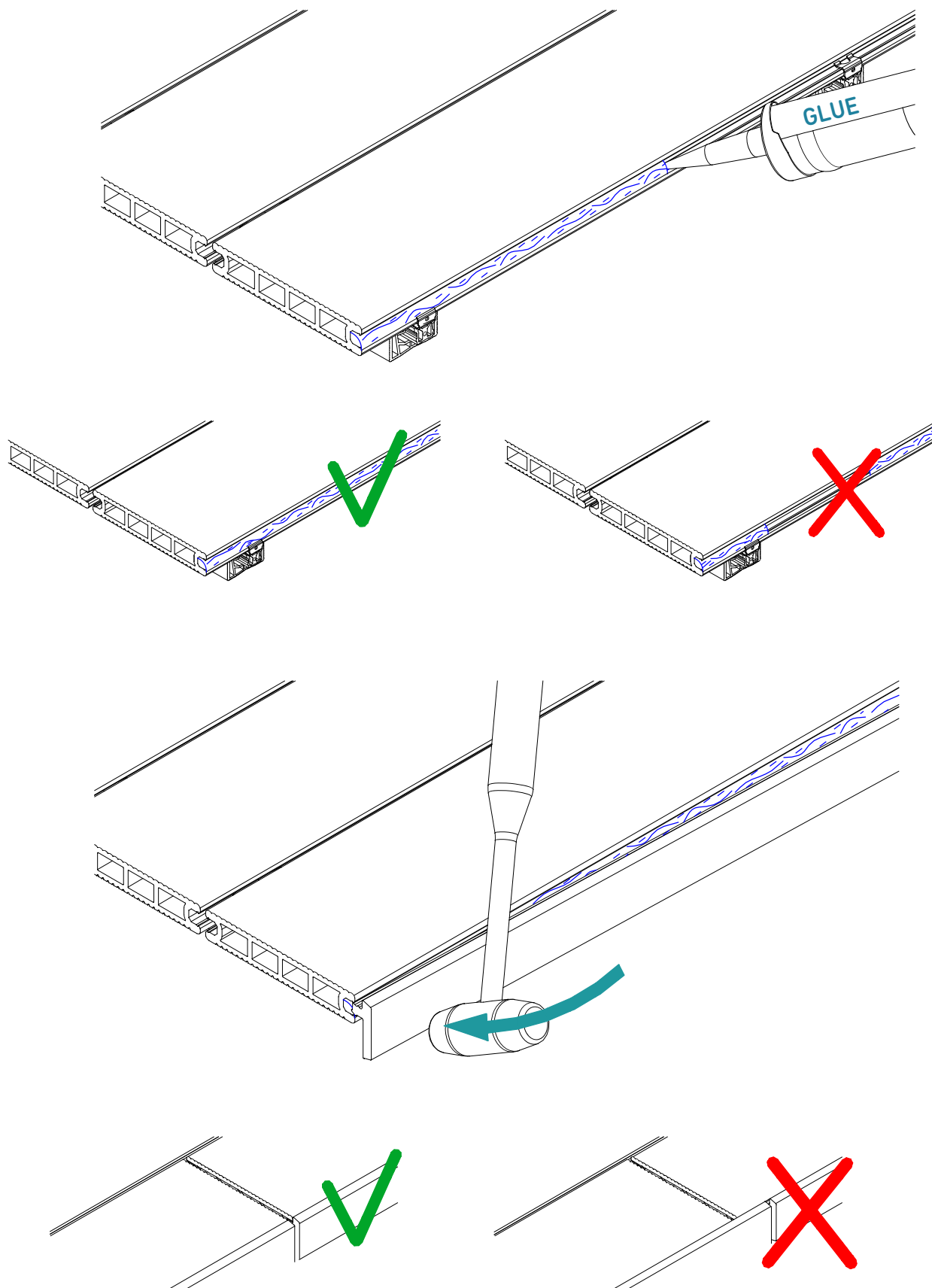


4. CDECK STEP ASSEMBLY

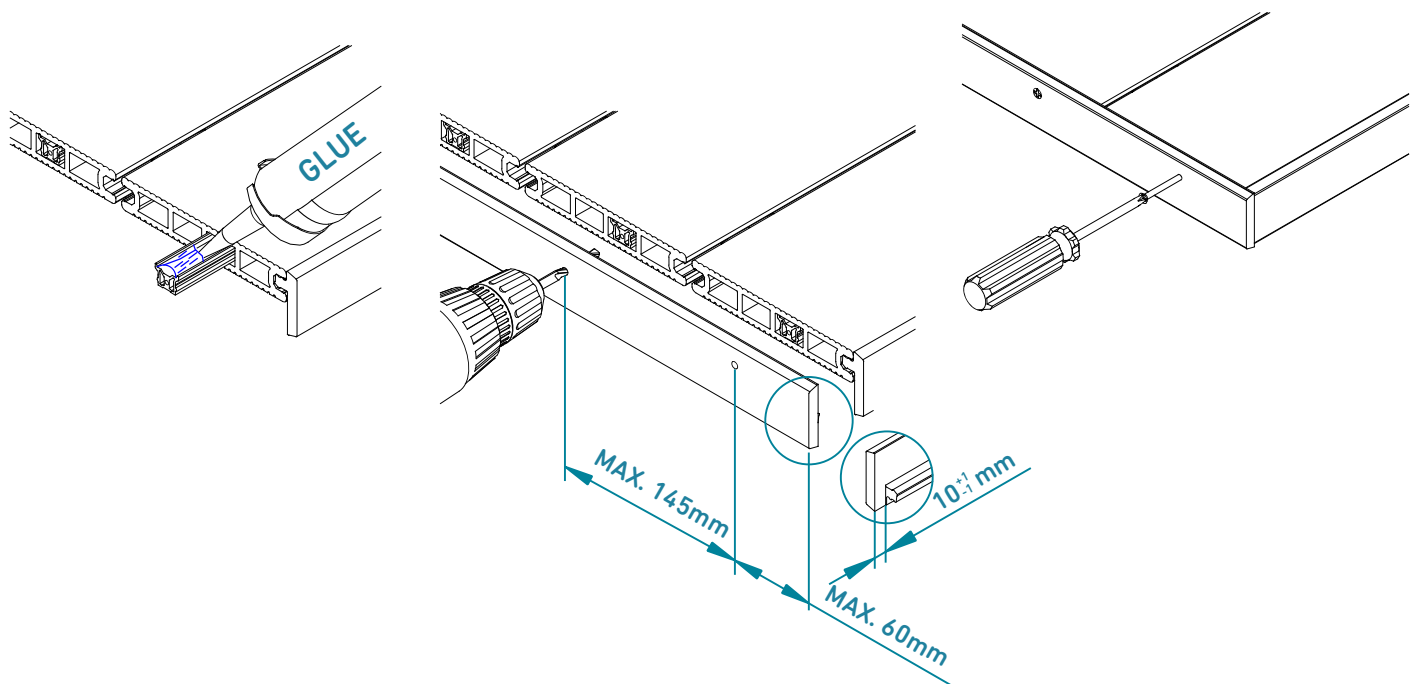


5. FASTENING THE CDECK FASTENER

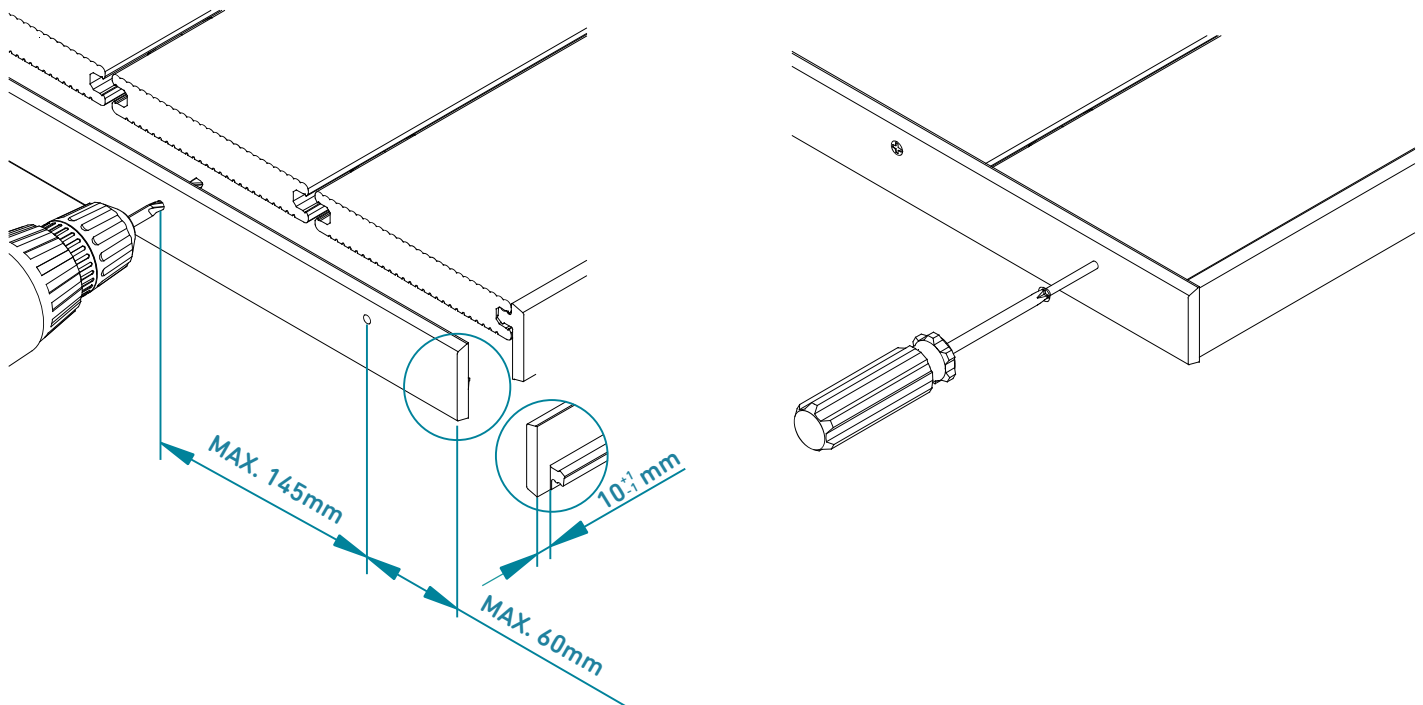
5.1



5.2.1 HOLLOW BOARD

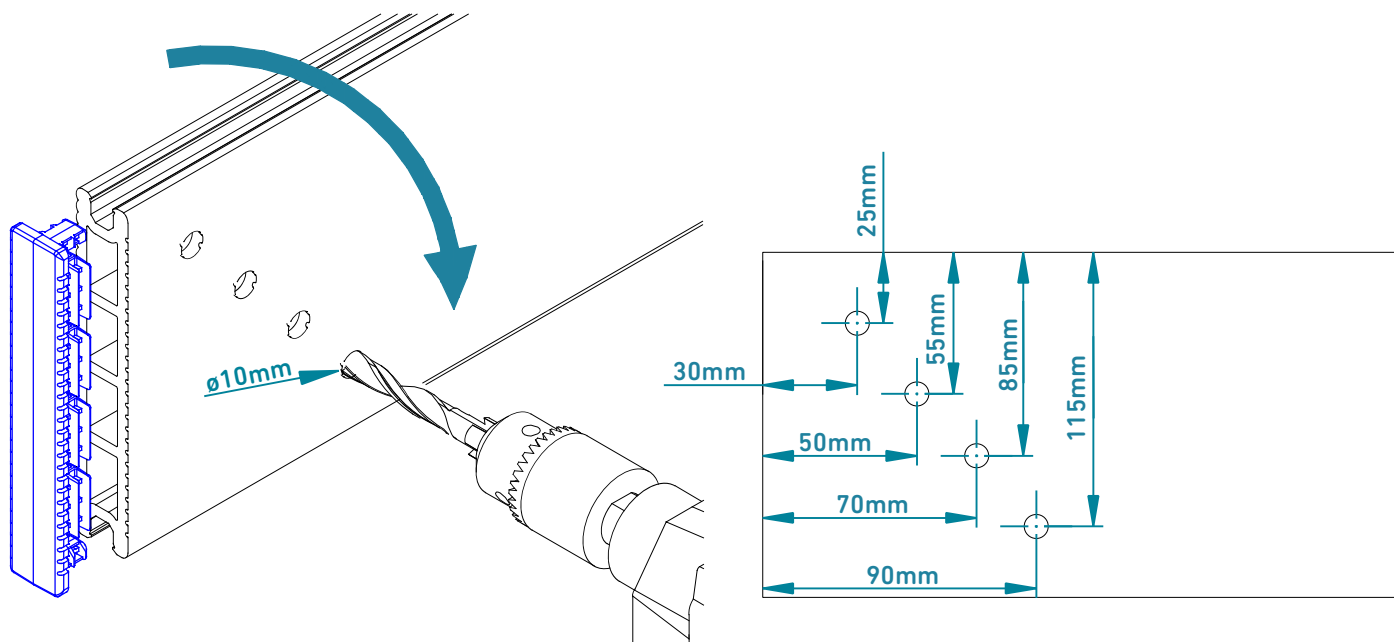


5.2.2 SOLID BOARD

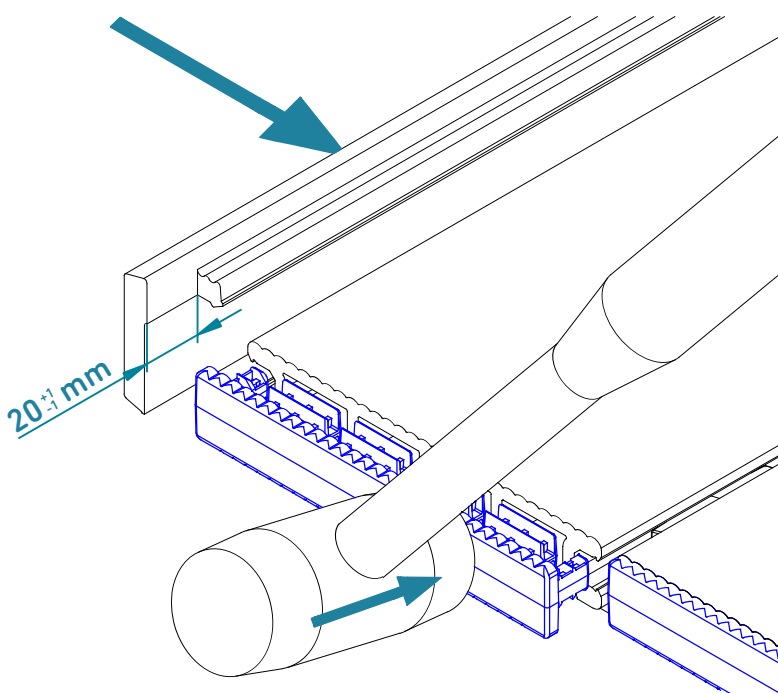


6. BOARD END CAP ASSEMBLY

6.1 OPENING OF HOLES IN THE LOWER PART FOR DRAINAGE/VENTILATION

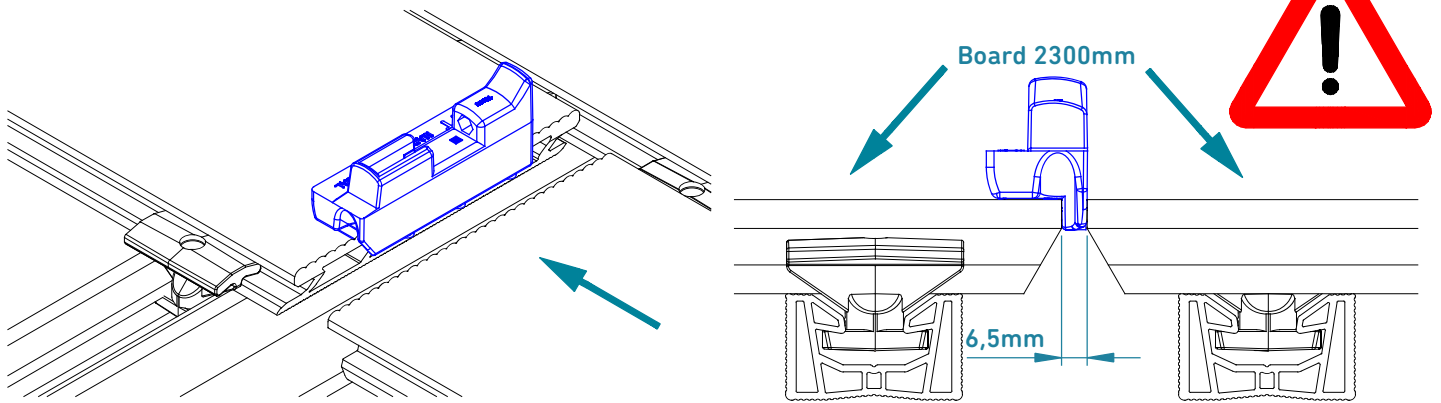


6.2 PLACING THE BOARD END CAP OF THE BOARD

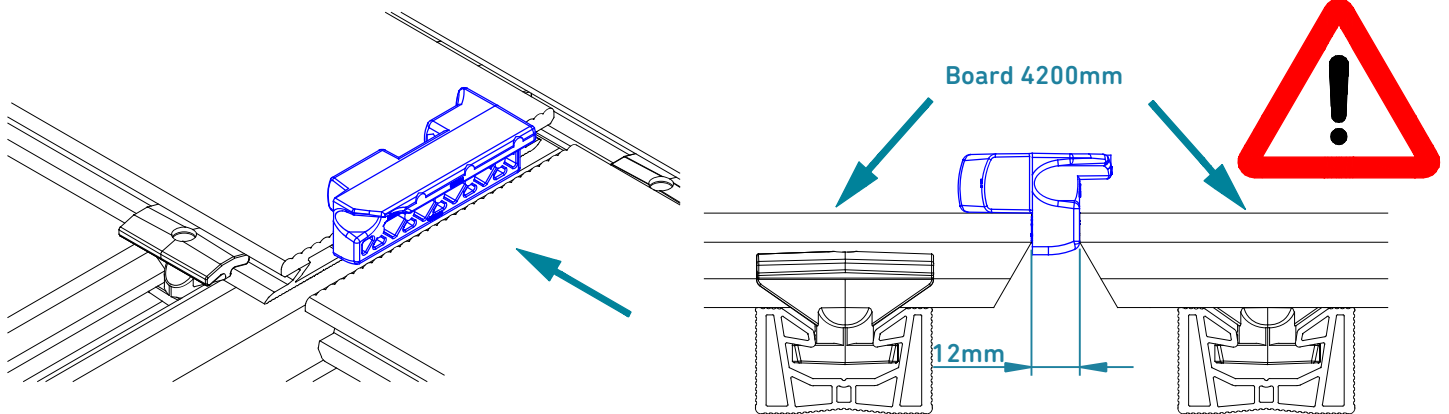


7. USING THE CTOOL TOOL

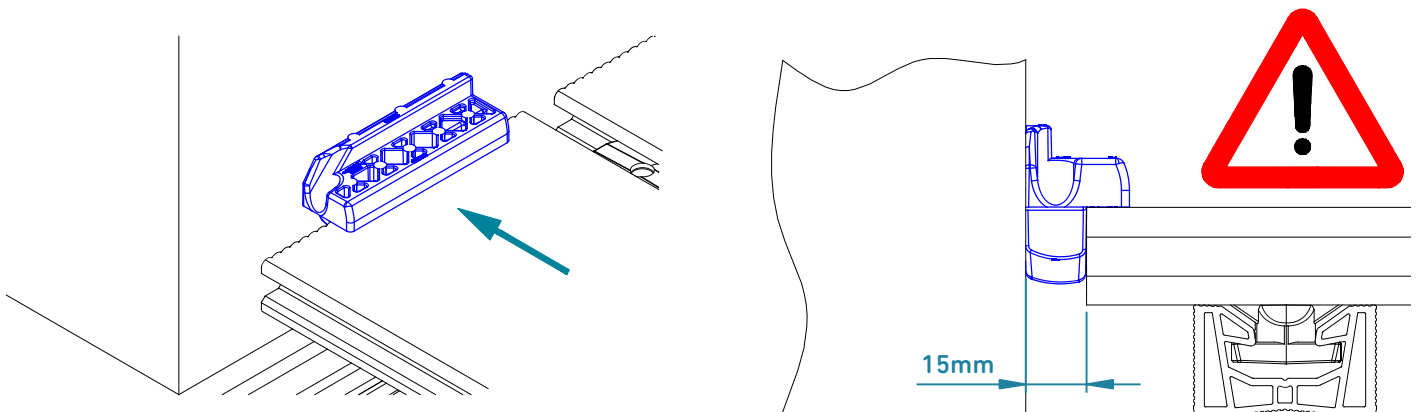
7.1 CLEARENCE OF THE BOARDS 2300



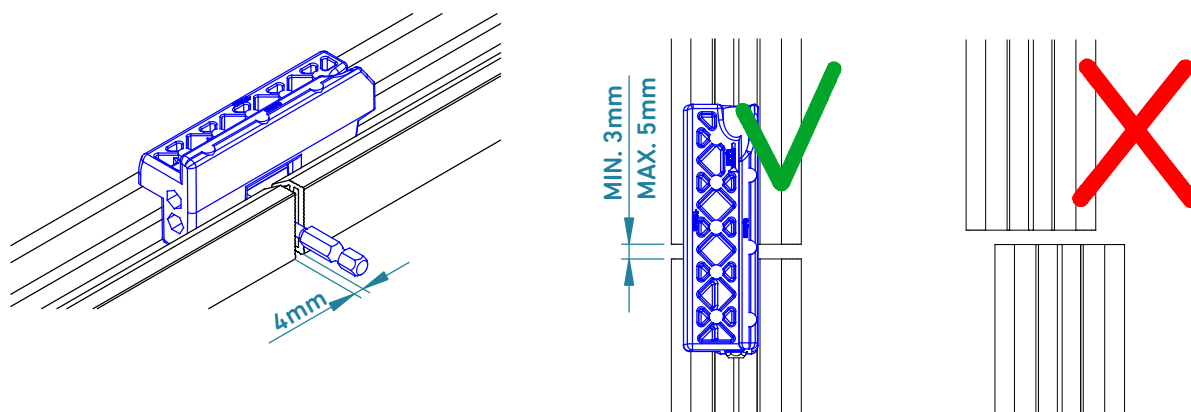
7.2 CLEARENCE OF THE BOARDS 4200



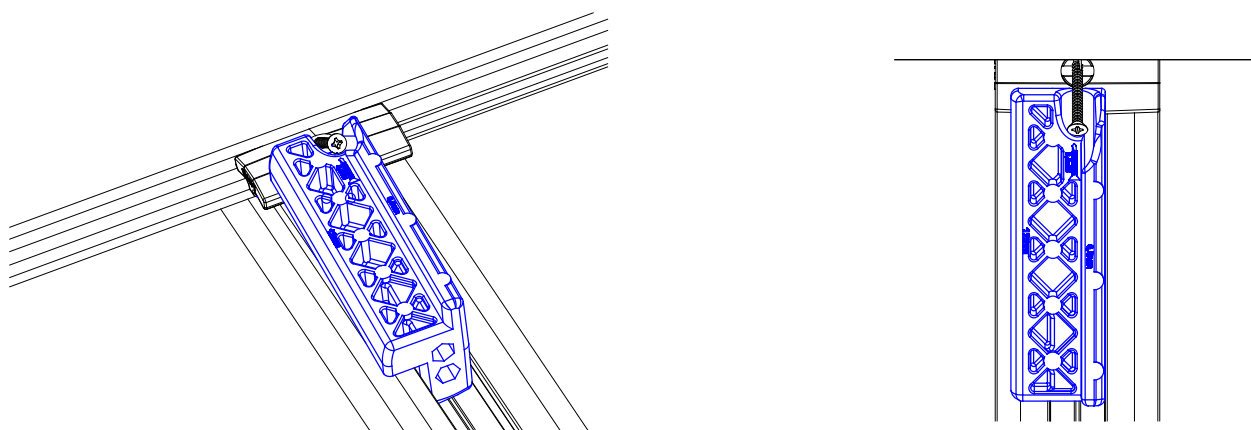
7.3 CLEARENCE FROM THE FIXED ELEMENTS



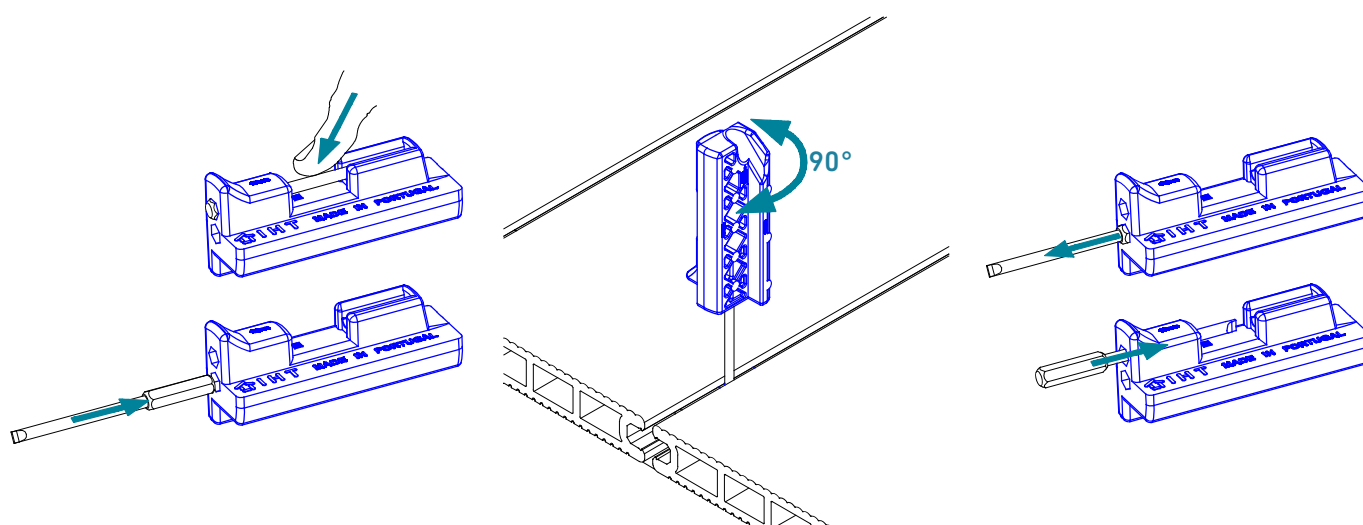
7.4 ALIGNING THE JOISTS



7.5 POSITIONING OF THE BOARD'S CENTRAL CLAMPING SCREW

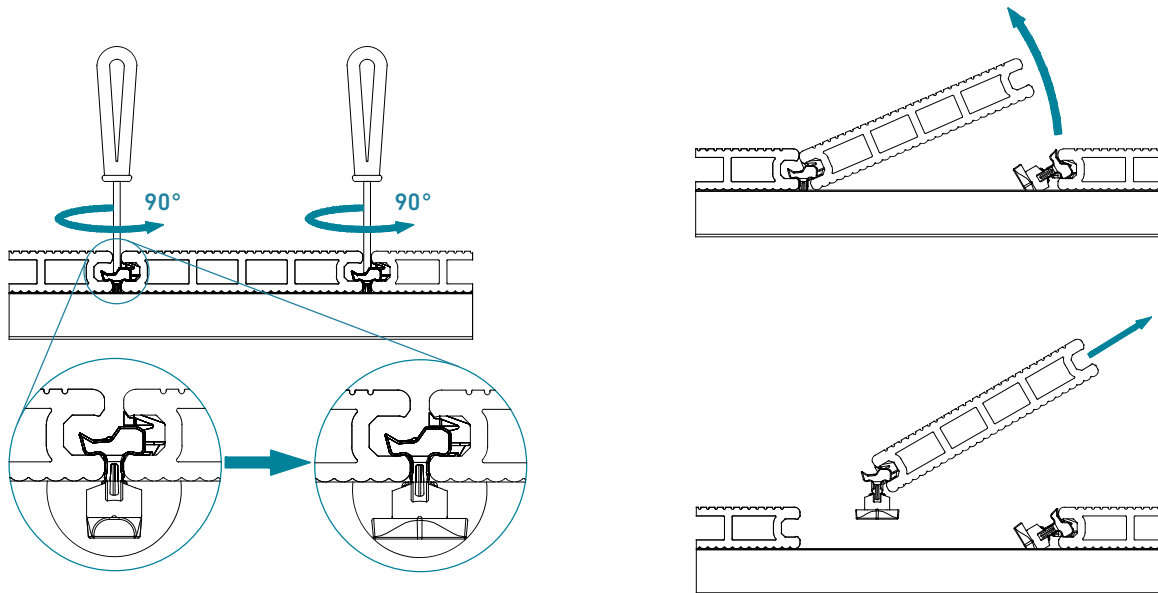


7.6 OPENING AND CLOSING KEY FOR THE QUICK-FIX PRO INTERMEDIATE CLIP

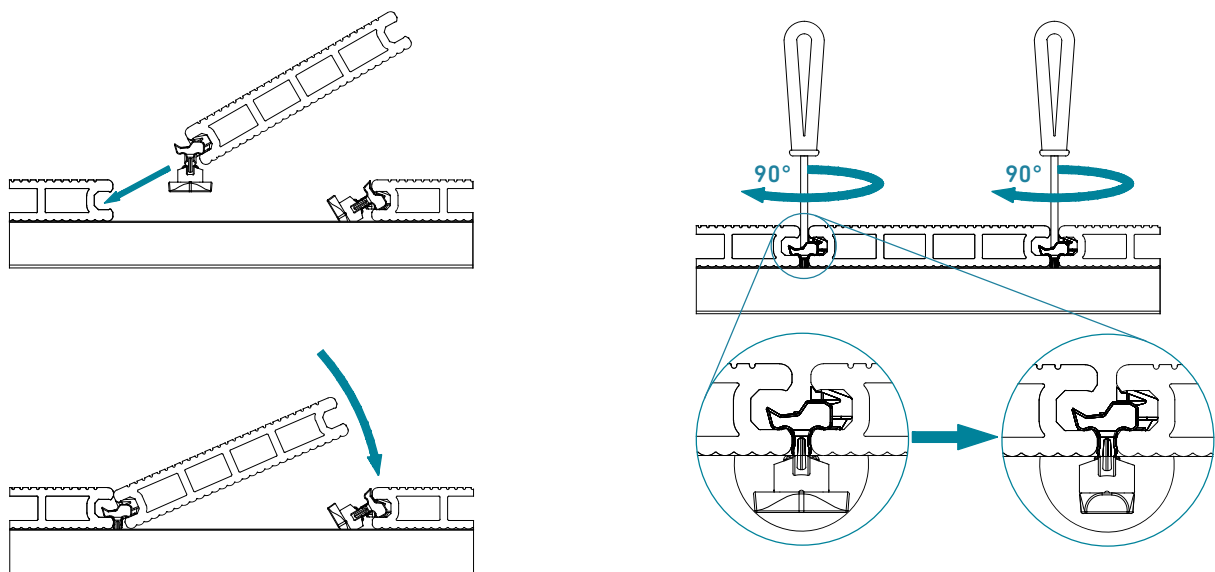


8. UNINSTALLING AND REINSTALLING BOARDS WITH THE QUICK-FIX PRO INTERMEDIATE CLIP

8.1 INDIVIDUAL OPENING OF THE BOARD



8.2 REINSTALLING THE OPEN BOARD





9. CDECK MAINTENANCE

9.1 INITIAL MAINTENANCE

During fitting it is common for a lot of dust to be produced, so we recommend the deck to be thoroughly cleaned with water, mild detergent and a soft brush. You can use a garden hose or a high pressure apparatus (at a minimum distance of 30 cm and a maximum pressure of 150 bar), always washing the boards in the direction of the grooves.

9.2 REGULAR MAINTENANCE

The composite CDECK is easy to maintain. However, it still needs regular cleaning.

As with any covering made of wood, synthetic materials, stone, etc., the CDECK may also show signs of moss, due to a set of external factors, particularly in extremely humid environments, with little exposure to sun and where there is a tendency for large amounts of dust to collect. Given this, it is recommended that the system is regularly cleaned to keep it looking good and to ensure that waste does not remain permanently. For best results, use a pressure machine and the indicated solution (at a distance of 30 cm and a maximum pressure of 150 bar). The jet must be applied along the length of the boards.

After installation, you should avoid moving heavy and/or sharp objects over the boards. If this happens, it is natural for scratches to appear. However, these will tend to disappear as the colour of the scratched areas stabilises.

For more persistent stains, caused by the fall of products onto the boards, act immediately so as to minimise the absorption of these products into the wooden fibres, by washing the boards with a chlorine solution (with a little bleach), and rubbing with a steel wool pad along the length of the boards. If you can not remove stains or stains through this process, you can brush the boards with a wire brush or sandpaper. Although this action will cause a colour difference in the brush area, this difference will disappear as the colour stabilises.

9.3 GENERAL ASPECTS

The CDECK is a semi-natural product, so that the variations in colour and texture are likely to appear over time. During the first months after outdoor fitting, the colour will gradually change until it stabilises. The boards will take on a final colour which is lighter and more natural than the original colour, due to the absorption of water by the wooden fibres. Once stabilised, colour and texture remain virtually unchanged.

Under certain conditions, static electricity may be formed. This is a natural phenomenon due to the fact that the CDECK includes thermoplastic. However, it will tend to disappear once the texture stabilises.